

Three Phase Squirrel Cage Induction Motor

Motor type TA3-160L-4 B3



Electrical Data

| RATED VALUES | | | | | | | STARTING VALUES | | | | BREAKDOWN | EFFICIENCY | | | EFFICIENCY CLASS |
|--------------|-------|----|-------|------------|--------|-------|--|--|--------------|------|-----------|------------|-----|------|------------------|
| VOLTAGE | POWER | | SPEED | CURRENT | TORQUE | Cos φ | CURRENT | | TORQUE | | TORQUE | % | | | IEC 60034-30-1 |
| V | kW | Hz | rpm | A | Nm | 4/4 | I _A / I _N Y D | M _A / M _N Y D | Mk/ Mn Nm | | | 4/4 | 3/4 | 2/4 | IE |
| 400/690 | 15 | 50 | 1477 | 30,85/17,8 | 97,10 | 0,76 | 2,6 | 7,833 | 0,9 | 2,84 | 3,3 | IE3-92,1% | 92 | 90,8 | IE3 |
| 460/795 | 17,3 | 60 | 1773 | 28,2/16,3 | 92,90 | 0,82 | 2,5 | 7,598 | 0,9 | 2,7 | 3,2 | - | - | - | |
| | | | | | | | | | | | | | | | |

Mechanical Data

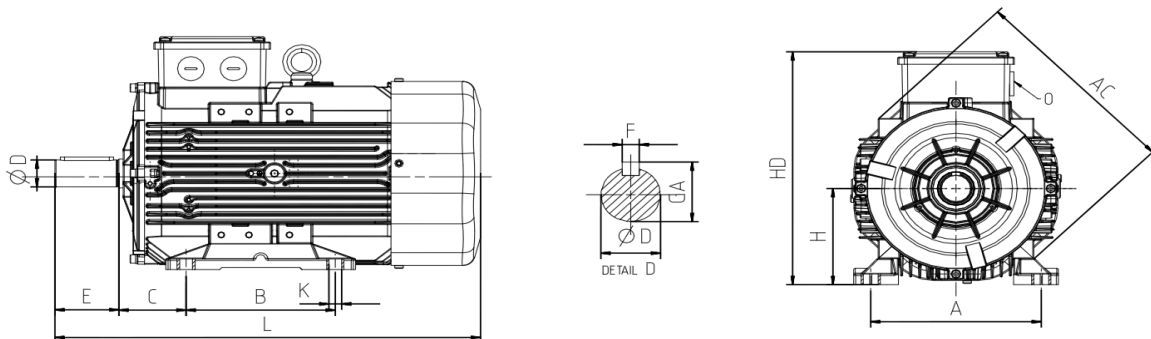
| | | | |
|----------------------------|-----------------------|--------------------------|--------------|
| Bearing DE | 6309-ZZ | Color | RAL 7030 |
| Bearing NDE | 6209-ZZ | Motor protection | PTC |
| Lubricants | Shell Gadus S5 V220-2 | Method of cooling | IC 411 |
| Condensation drain hole | No | Terminal box position | Top |
| External earthing terminal | Yes | Material of terminal box | Aluminium |
| Vibration class | A | Terminal plate thread | M6 |
| Insulation Class | F | Cable gland | 1xM32 |
| Duty type | S1 | Clamping range | 18-25 mm |
| Direction of rotation | Clockwise | Mounting type | IM 1001 (B3) |
| Housing material | Aluminium | | |
| Type of balancing | Half Key | | |

Environmental Data

Others

| | | | |
|--------------------------|---------------|---|-------------|
| Ambient Temperature | -20 / + 40 °C | Type of protection | IP 56 |
| Altitude above sea level | 1000 m | Sound Pressure Level 50/60Hz dBA | 62 |
| | | Moment of Inertia (kg.mm ²) | 0,090053 |
| | | Standard | IEC 60034-1 |
| | | Weigh (Kg) | 101 |

Dimensions



| Main Dimensions | | Foot Mounted Motors | | | | | | Shaft | | | | Flange Mounted Motors | | | |
|-----------------|-----|---------------------|-----|-----|-----|------|-----|-------|-----|----|----|-----------------------|---|---|---|
| AC | L | B | A | H | HD | K | C | D | E | GA | F | P | N | M | R |
| 305 | 591 | 210-254 | 254 | 160 | 368 | 14,5 | 108 | 42 | 110 | 45 | 12 | - | - | - | - |