



## Three Phase Squirrel Cage Induction Motor

Motor type TA3-160L-6 B3

### Electrical Data

RATED VALUES						STARTING VALUES				BREAKDOWN	EFFICIENCY			EFFICIENCY CLASS				
VOLTAGE	POWER		SPEED	CURRENT	TORQUE	Cos φ	CURRENT		TORQUE		TORQUE	%			IEC 60034-30-1			
V	kW	Hz	rpm	A	Nm	4/4	I <sub>A</sub> / I <sub>N</sub>	Y	D	M <sub>A</sub> / M <sub>N</sub>	Y	D	Mk/ Mn	Nm	4/4	3/4	2/4	IE
400/690	11	50	975	26.2/15.1	107,74	0,68	1,5	4,5	0,6	1,93	2,3		IE3-90,3%	90,4	89,7			IE3
460/795	12,7	60	1175	26.0/15.0	102,81	0,69	1,5	4,365	0,6	1,83	2,3		-	-	-			

### Mechanical Data

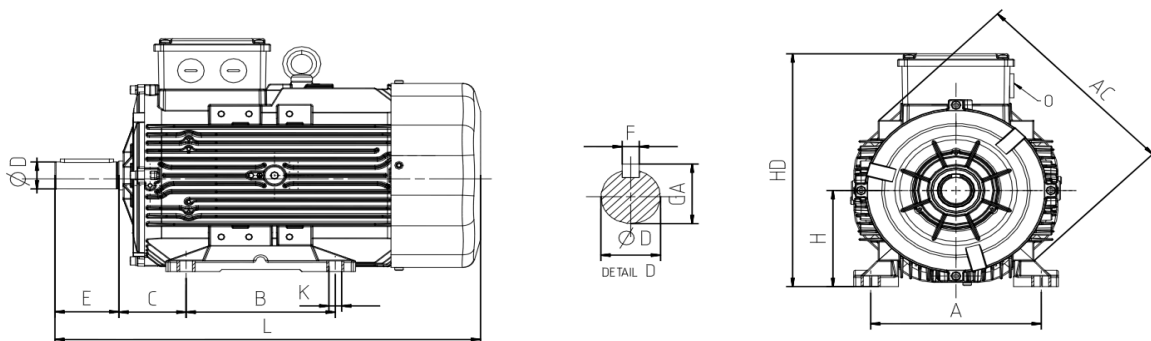
Bearing DE	6309-ZZ	Color	RAL 7030
Bearing NDE	6209-ZZ	Motor protection	PTC
Lubricants	Shell Gadus S5 V220-2	Method of cooling	IC 411
Condensation drain hole	No	Terminal box position	Top
External earthing terminal	Yes	Material of terminal box	Aluminium
Vibration class	A	Terminal plate thread	M6
Insulation Class	F	Cable gland	1xM32
Duty type	S1	Clamping range	18-25 mm
Direction of rotation	Clockwise	Mounting type	IM 1001 (B3)
Housing material	Aluminium		
Type of balancing	Half Key		

### Environmental Data

### Others

Ambient Temperature	-20 / + 40 °C	Type of protection	IP 56
Altitude above sea level	1000 m	Sound Pressure Level 50/60Hz dBA	62/65
		Moment of Inertia (kg.mm <sup>2</sup> )	0,09
		Standard	IEC 60034-1
		Weigth (Kg)	101

### Dimensions



Main Dimensions		Foot Mounted Motors						Shaft				Flange Mounted Motors			
AC	L	B	A	H	HD	K	C	D	E	GA	F	P	N	M	R
305	619	210-254	254	160	378	14,5	108	42	110	45	12	-	-	-	-