



Three Phase Squirrel Cage Induction Motor

Motor type TA3-160M-4 B3

Electrical Data

RATED VALUES							STARTING VALUES				BREAKDOWN	EFFICIENCY			EFFICIENCY CLASS
VOLTAGE	POWER		SPEED	CURRENT	TORQUE	cos φ	CURRENT		TORQUE		TORQUE	%			IEC 60034-30-1
V	kW	Hz	rpm	A	Nm	4/4	I _A / I _N Y D	M _A / M _N Y D	Mk / Mn Nm	Mk / Mn Nm	4/4	3/4	2/4	IE	
400/690	11	50	1470	21,0/12,1	71,50	0,83	2,9	8,8	0,7	2,1	3,8	IE3-91,4%	91,5	90,4	IE3
460/795	12,7	60	1768	20,6/11,9	68,52	0,84	2,8	8,6	0,7	2	3,7	-	-	-	

Mechanical Data

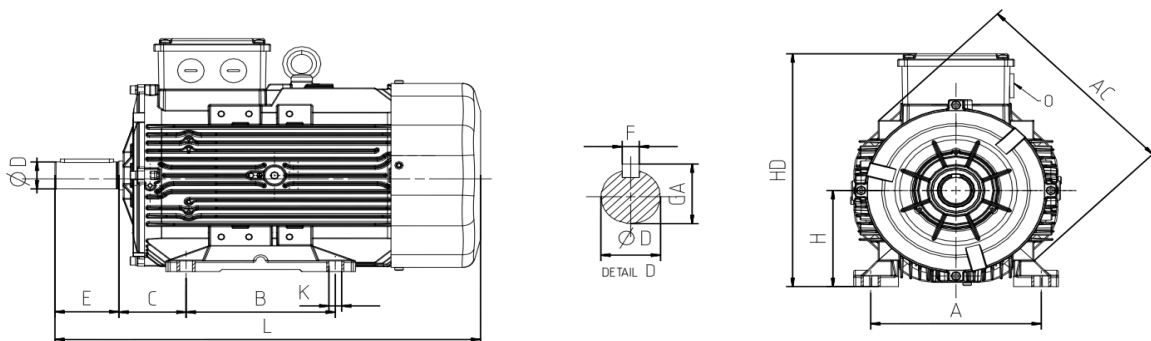
Bearing DE	6309-ZZ	Color	RAL 7030
Bearing NDE	6208-ZZ	Motor protection	PTC
Lubricants	Shell Gadus S5 V220-2	Method of cooling	IC 411
Condensation drain hole	No	Terminal box position	Top
External earthing terminal	Yes	Material of terminal box	Aluminium
Vibration class	A	Terminal plate thread	M6
Insulation Class	F	Cable gland	1xM32
Duty type	S1	Clamping range	18-25 mm
Direction of rotation	Clockwise	Mounting type	IM 1001 (B3)
Housing material	Aluminium		
Type of balancing	Half Key		

Environmental Data

Others

Ambient Temperature	-20 / + 40 °C	Type of protection	IP 56
Altitude above sea level	1000 m	Sound Pressure Level 50/60Hz dBA	63
		Moment of Inertia (kg.mm ²)	0,0594
		Standard	IEC 60034-1
		Weigth (Kg)	84

Dimensions



Main Dimensions		Foot Mounted Motors						Shaft				Flange Mounted Motors			
AC	L	B	A	H	HD	K	C	D	E	GA	F	P	N	M	R
260	578	210-254	254	160	351	14,5	108	42	110	45	12	-	-	-	-